

R454b
Refrigerant

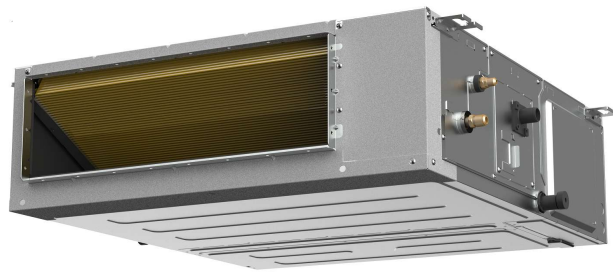
SUBMITTAL DATA SHEET

Series Name: Multi Zone Indoor Unit Duct
Model Number: CCOXHBSD18



Heat Pump System

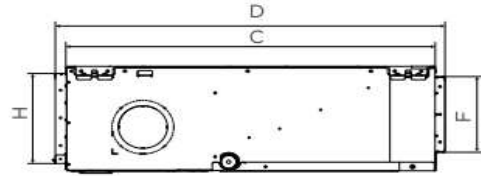
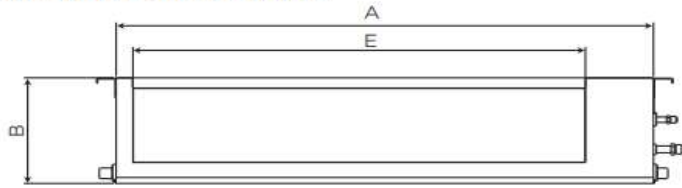
Location:	Approval:
Engineer:	Date:
Submitted to:	Construction:
Submitted by:	Unit #:
Reference:	Drawing #:



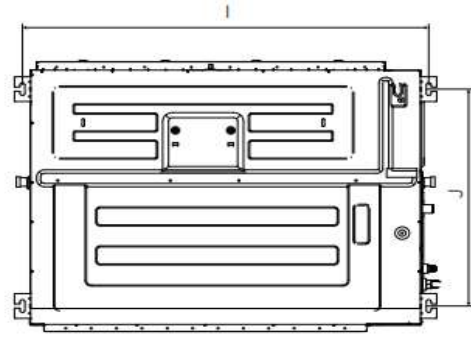
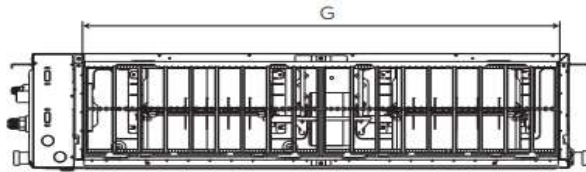
Item	Unit	Specification
Performance Data		
Cooling Capacity*	Btu/h	17,500
Heating Capacity*	Btu/h	19,500
Design Pressure	PSIG	550 / 340
Refrigerant Type	-	R454b
Liquid Side	inch(mm)	1/4" (6.35mm)
Gas Side	inch(mm)	1/2" (12.7mm)
Drain Pipe Size	inch(mm)	1" (25mm)
Indoor Operation Range of Cooling	Deg.°F (°C)	60°F ~90°F (16°C~32°C)
Indoor Operation Range of Heating	Deg.°F (°C)	32°F~86°F (0°C~30°C)
Electrical		
Normal Operational Voltage	V, Ph, Hz	208/230V,1Ph, 60Hz
Voltage Range	V	187-253
Connection Wiring	-	AWG 14/4
MCA	A	3.0
Indoor Fan Motor Model	-	ZKFN-165-10-1L
Indoor Fan Motor Output	W	165
Indoor Fan Motor RLA	A	1.8
Indoor Fan Motor Speed(Hi/Mi/Lo)	r/min	820 / 760 / 700
Air Flow & Noise Level		
Indoor Air Flow (H/M/L)	CFM	706 / 618 / 530 / 441 / 441
Indoor Noise Level (H/M/L)	dB(A)	36 / 36 / 34 / 32 / 28
Dimension (W×D×H)	inch	39-3/8 x 29-1/2 x 9-5/8
	mm	1000 × 750 × 245
Package (W×D×H)	inch	48-1/4 x 33-7/8 x 12
	mm	1225 × 860 × 304
Net Weight / Gross Weight	lbs	80 / 91
	kg	36.2 / 41.4

*Standard capacity of indoor unit is for reference, capacity varies based on Multi-zone system combinations.

Air outlet dimensions



Air inlet dimensions



(unit: inch/mm)

MODEL	OUTLINE DEMENSION				AIR OUTLET OPENING SIZE		AIR RETURN OPENING SIZE		SIZE OF MOUNTED LUG	
	A	B	C	D	E	F	G	H	I	J
9K/12K	27.6/700	9.6/245	29.5/750	31.3/795	20.7/527	7.0/178	23.3/592	8.3/212	29.1/740	25.2/640
18K/24K	39.4/1000	9.6/245	29.5/750	31.3/795	32.6/827	7.0/178	35.1/892	8.3/212	40.9/1040	25.2/640
36K/48K	47.2/1200	11.8/300	29.5/750	31.3/795	40.4/1027	9.2/233	43.0/1092	10.5/267	48.8/1240	25.2/640
55K/60K	55.1/1400	14.9/380	31.5/800	33.3/845	48.1/1223	12.6/320	50.1/1272	13.0/330	56.7/1440	26.3/668